

SRMC Smart Sensor Quick Start Guide



SRMC Inaugural Product (2019) - SMMS

SRMC Smart Sensor Quick Start Guide

Congratulations on your purchase of a SRMC Smart Sensor!

These easy-to-use instructions, downloadable from the SRMC website (SRMC-Electronics.com), will help you with your installation and operation.

SRMC Smart Sensors collect data every 60 minutes and will save the readings for the last 7 days. Sensors send emails and text messages to users.

By delivering email reports and text messages directly to the users, users no longer need to purposely query the device for data.

A. STEPS TO INSTALL SMART SENSOR

Follow the Installation Guide instructions for your purchased sensor.

B. STEPS TO ADD A SENSOR TO A WI-FI NETWORK

(1) Go to the Google Play Store, find the "SRMC Smart Sensor" App and install the app.

SRMC Smart Sensor Quick Start Guide

(2) Start the "SRMC SMART Sensor" app. Select "Start", then select "Provision".

B. STEPS TO ADD A SENSOR TO A WI-FI NETWORK

(3) On the "Add Device" screen, scan the QR code on the sensor or select "I don't have a QR code" and then select "BLE" to scan and display a list of available sensors within 20 feet.



(4) Follow directions to set up the sensor to access the desired Wi-Fi network and to send email and text messages. Accept the default sensor password.

(5) Return to the "Start". Click "Setting" to review the setup and make changes. Check email for the first report.

(6) The "Settings" page will display the high and low default alerts for the sensor's type, along with the latest reported sensor data.

(7) To change the setting, go to the desired setting and enter the new setting. Continue entering new settings as desired. Click the "Save" button to store the new settings in the database.

SRMC Smart Sensor Quick Start Guide

(8) Follow directions to set up the sensor to access the desired Wi-Fi network and to send email and text messages. Accept the default sensor password.

(9) Return to the "Start". Click "Setting" to review the setup and make changes. Check email for the first report.

(10) The "Settings" page will display the high and low default alerts for the sensor's type, along with the latest reported sensor data.

(11) To change the setting, go to the desired setting and enter the new setting. Continue entering new settings as desired. Click the "Save" button to store the new settings in the database.

SRMC Smart Sensor Quick Start Guide

C. REPORTS AND TEXT MESSAGES

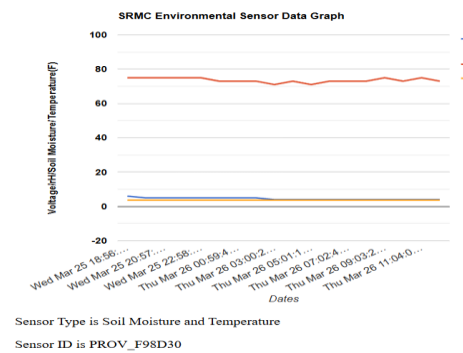
Summary reports and graphs are emailed to the address specified during setup. Text messages are sent to the specified mobile phone number, as allowed by the mobile phone provider.

Emails and text messages are sent daily at 0700, 1200, 1800 and the optional hour specified during setup.

Open the HTML attachment and the default browser will display the graph. Hover over chart legend items to highlight the graph of that legend item.

SRMC Smart Sensor Quick Start Guide

Example graph shown below



SRMC Smart Sensor Quick Start Guide

For additional information on emails, graphs, settings and text messages for the SMMS Smart sensor, download the "SRMC Sensor Users Guide" from www.SRMC-Electronics.com.

SRMC Smart Sensor Quick Start Guide

. Thank you for your purchase from SRMC.

[|contacts@SRMC-Electronics.com](mailto:contacts@SRMC-Electronics.com)
[|www.SRMC-Electronics.com](http://www.SRMC-Electronics.com)

SMART SMMS Installation Guide

1. Install the enclosed 14500 3.7v rechargeable battery into the battery holder using the orientation shown on the battery holder.

For proper operation of the temperature monitor, install batteries and keep the device in a 22-Degree Celsius (72-Degree Fahrenheit) room for 30 seconds.

Take care in handling the device. The probe is breakable

2. Secure the top to the bottom using the enclosed screws to 7 ft-lbs.



Recommended tool: Power torque screwdriver

SMART SMMS Installation Guide

5. Go to the Google Play Store, find the "SRMC Smart Sensor" App and install the app.



See the "SRMC Smart Sensor Quick Start Guide" for additional details.

6. The Smart sensor will send graphs and reports via email and text alerts to the email address and mobile phone number, respectively provided during setup.

SMART SMMS Installation Guide

SMART SMMS Installation Guide

SMART SMMS Installation Guide



Example of Properly Tightened Top

Recommended tool: Garden hand trowel



3. Select a soil location and loosen the soil
4. Remove a small amount of soil and sink the SMMS device until about 1/2" of the device is above the soil.

Take care in handling the device. The probe is breakable.

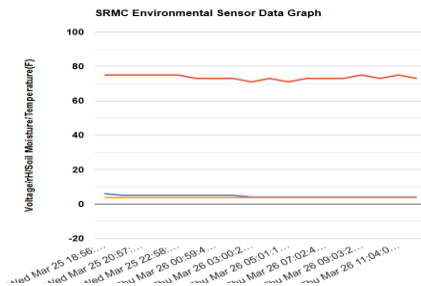
SMART SMMS Installation Guide

SMART SMMS Installation Guide

7. For additional information on emails, graphs and text messages for the SMMS Smart sensor, download the "SRMC Sensor Users Guide" from www.SRMC-Electronics.com.

Thank you for your purchase from SRMC.

| contacts@SRMC-Electronics.com |
www.SRMC-Electronics.com



SMART HTMS Installation Guide



SRMC HTMS

SMART HTMS Installation Guide

1. Remove the supplied 26650 battery from the battery compartment.
2. Remove the plastic protective circular blanks covering both the + and – battery terminals.
3. Install the enclosed 26650 3.7V rechargeable battery into the battery holder using the orientation shown on the battery holder.

For proper operation of the temperature monitor, install batteries and keep the device in a 72-Degree Fahrenheit room for 30 seconds.

A 26650 battery with 3.7VDC is required. The EBI26650 battery is recommended due to the variation of the physical size of 26650 batteries.

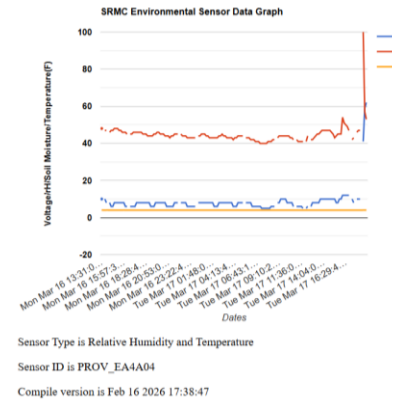
SMART HTMS Installation Guide

4. Secure the top of the enclosure to the bottom of the enclosure by properly aligning the enclosure latching tabs.
5. Place the sensor at the desired indoor location.
6. Go to the Google Play Store, find the “SRMC SMART Sensor” App and install the app.
7. The Smart sensor will send graphs and reports via email and text alerts to the email address and mobile phone number provided during setup.



SMART HTMS Installation Guide

See the “SRMC Smart Sensor Quick Start Guide” for additional details.



8. For additional information on emails, graphs and text messages for the SMMS Smart sensor, download the “SRMC Sensor Users Guide” from